

Scenic Rim Trail—Thornton Trailhead to Canopy Ecocamp

Trail and easement lengths

Class 3 length=1223.58m
 Class 4 soil length=10424.81m
 Class 4 boulders/scree length=727.05m
 Class 5 length=19226.22m

Class 3 trails have an easement of 150m. All other trails have an easement of 30m. Based on this information the following easement lengths have been calculated:

150m easement length=1223.58
 30m easement length=30378.08m

Existing QPWS trail length=23502.36m

Legend

- New trail from Thornton Trailhead to Mt Mistake Farmhouse
- Sunrise Lookout Walk
- Existing Northern Fire Trail
- Reopened Winder Road
- New Walking Trail 1
- Chute Lookout Deviation Walking Trail
- New Walking Trail 2
- Existing Winder Road
- New trail from Mt Castle Lookout to existing Cascades walking track
- Cascades Deviation Walking Trail
- New trail to existing Bare Rock track
- Sylvester's Link Trail
- Canopy Trail
- Existing QPWS trail
- State controlled roads
- World Heritage Area
- Main Range National Park

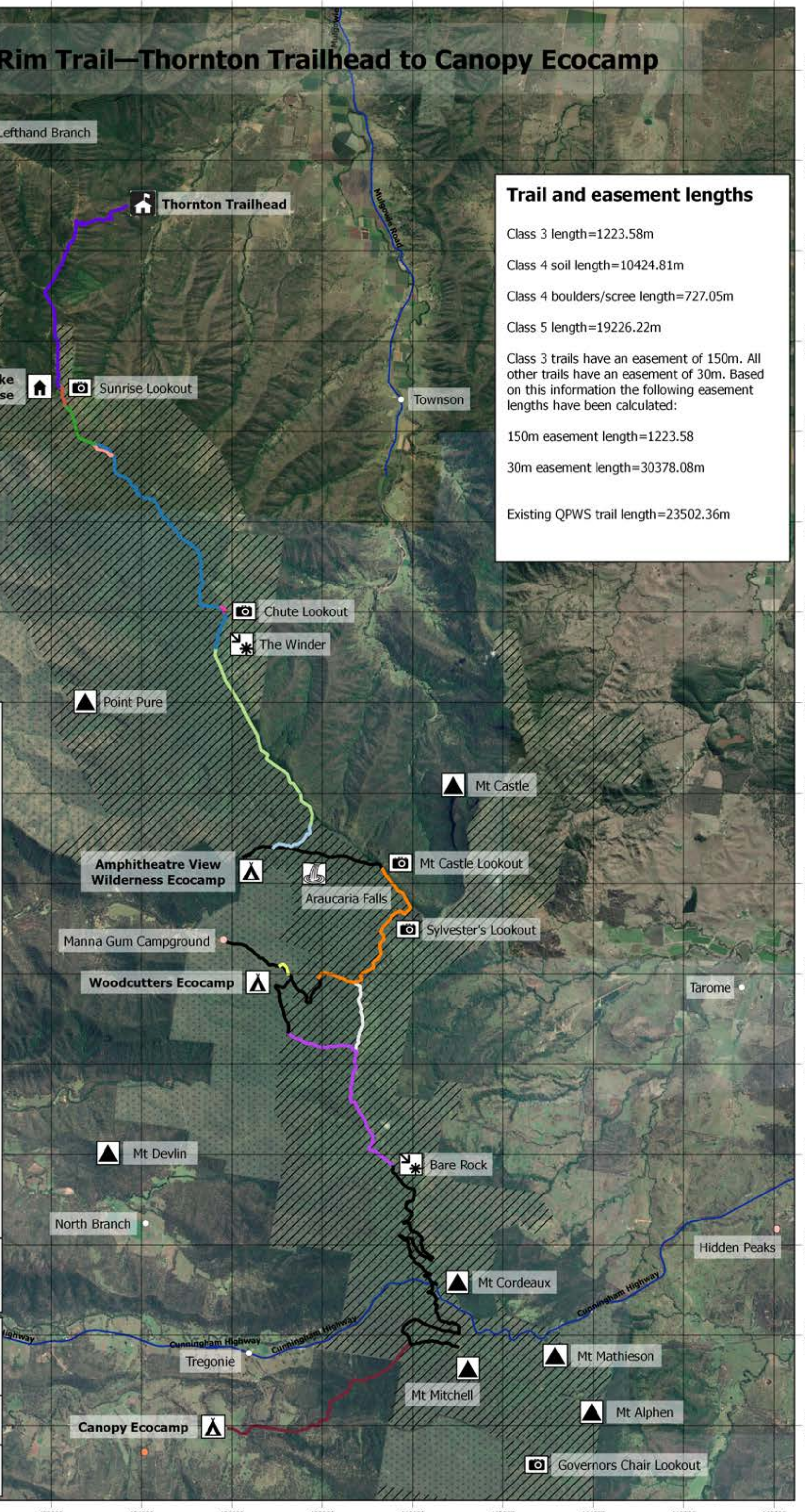
0 0.5 1 1.5 2 2.5 km



SCENIC RIM TRAIL
BY SPICERS

Compiled by D. Tucker in association with T. Charters and P. Young
 Data layers sourced from the Queensland Government
 Horizontal datum: GDA94
 Projection: Universal Transverse Mercator
 Version 1, 29/08/2017

Although the Scenic Rim Trail has been carefully planned to remain within national park and Gainsdale boundaries, unavoidable misregistrations between surveyed routes and existing mapping data have occurred in places.



Scenic Rim Trail—Thornton Trailhead to Canopy Ecocamp

Trail Sections and Classes

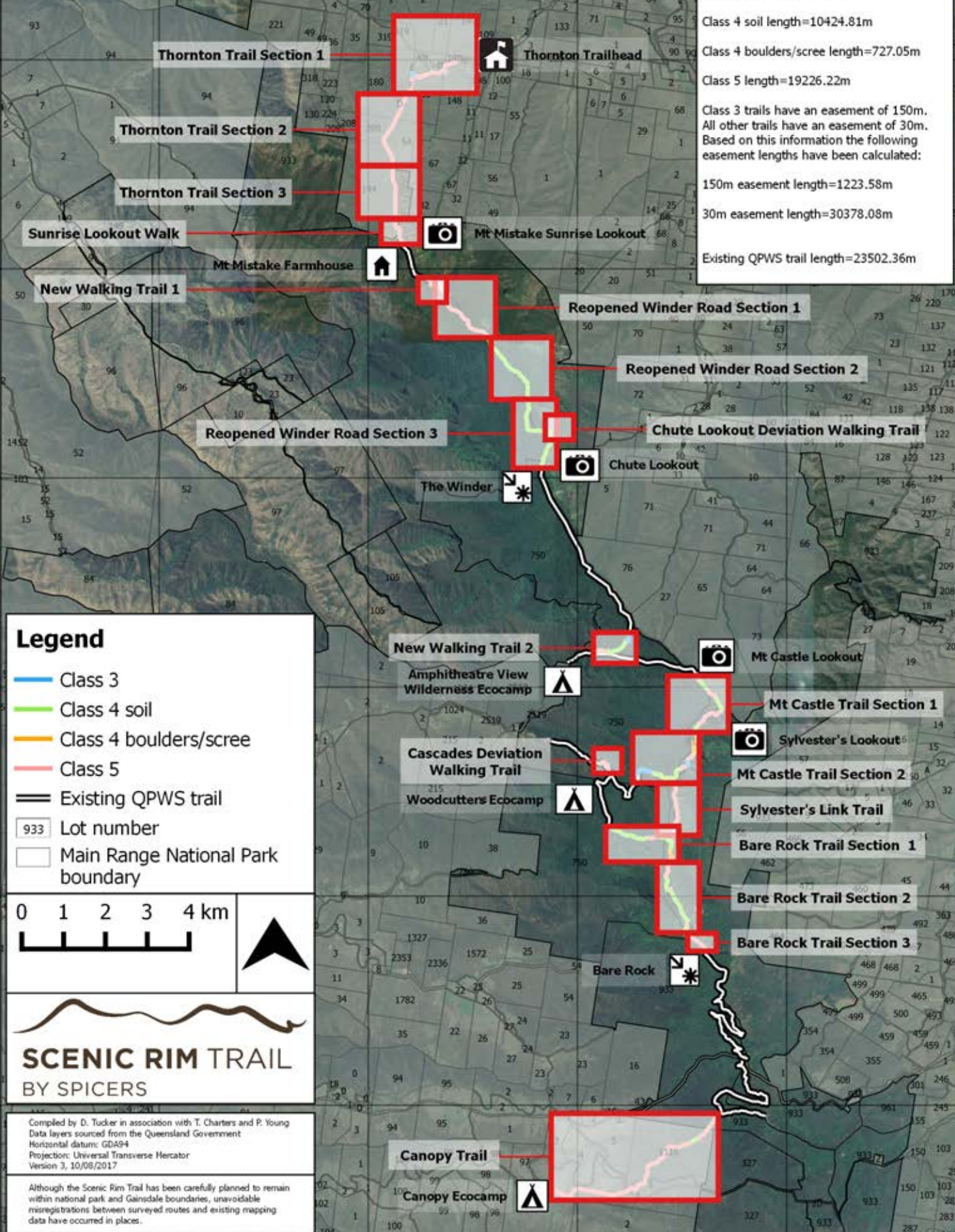
Trail and easement lengths

Class 3 length=1223.58m
 Class 4 soil length=10424.81m
 Class 4 boulders/scree length=727.05m
 Class 5 length=19226.22m

Class 3 trails have an easement of 150m.
 All other trails have an easement of 30m.
 Based on this information the following easement lengths have been calculated:

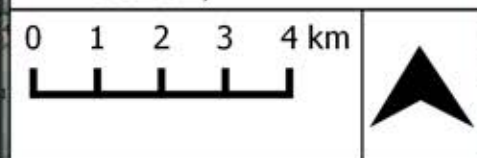
150m easement length=1223.58m
 30m easement length=30378.08m

Existing QPWS trail length=23502.36m



Legend

- Class 3
- Class 4 soil
- Class 4 boulders/scree
- Class 5
- Existing QPWS trail
- 933 Lot number
- Main Range National Park boundary



Compiled by D. Tucker in association with T. Charters and P. Young
 Data layers sourced from the Queensland Government
 Horizontal datum: GDA94
 Projection: Universal Transverse Mercator
 Version 3, 10/08/2017

Although the Scenic Rim Trail has been carefully planned to remain within national park and Gainsdale boundaries, unavoidable misregistrations between surveyed routes and existing mapping data have occurred in places.

Map and Elevation Profile of Thornton Trail Section 1

Legend

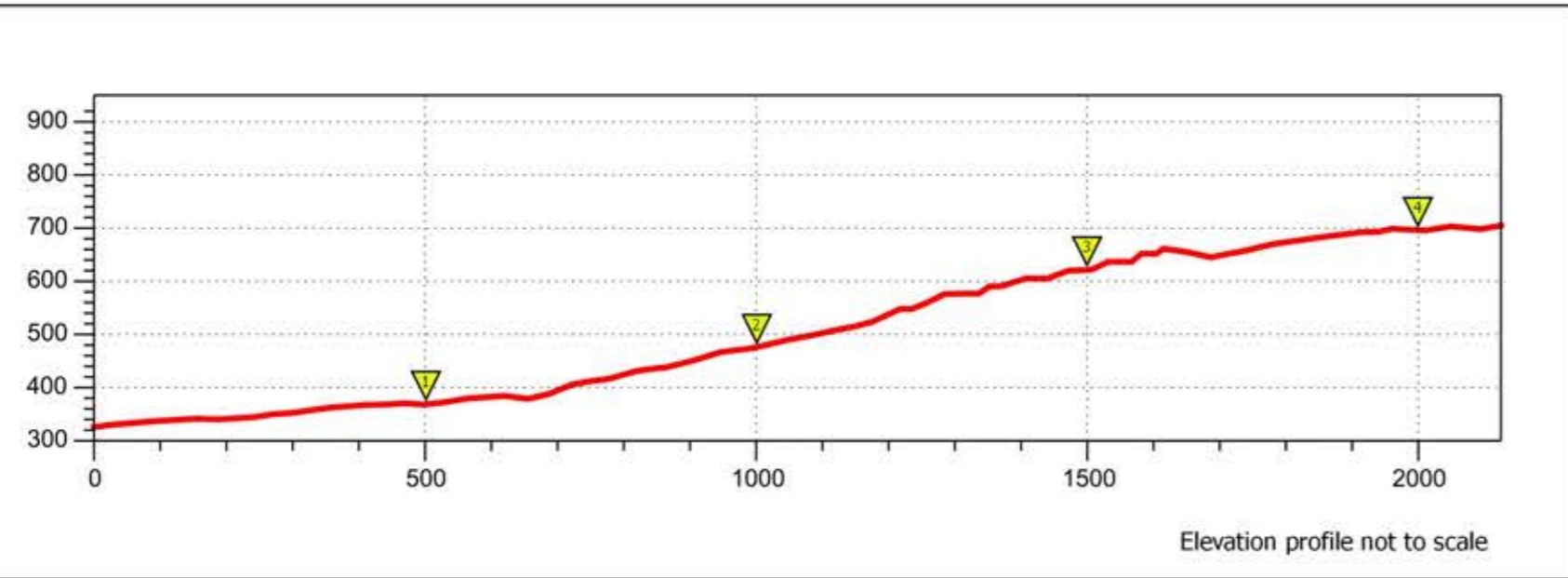
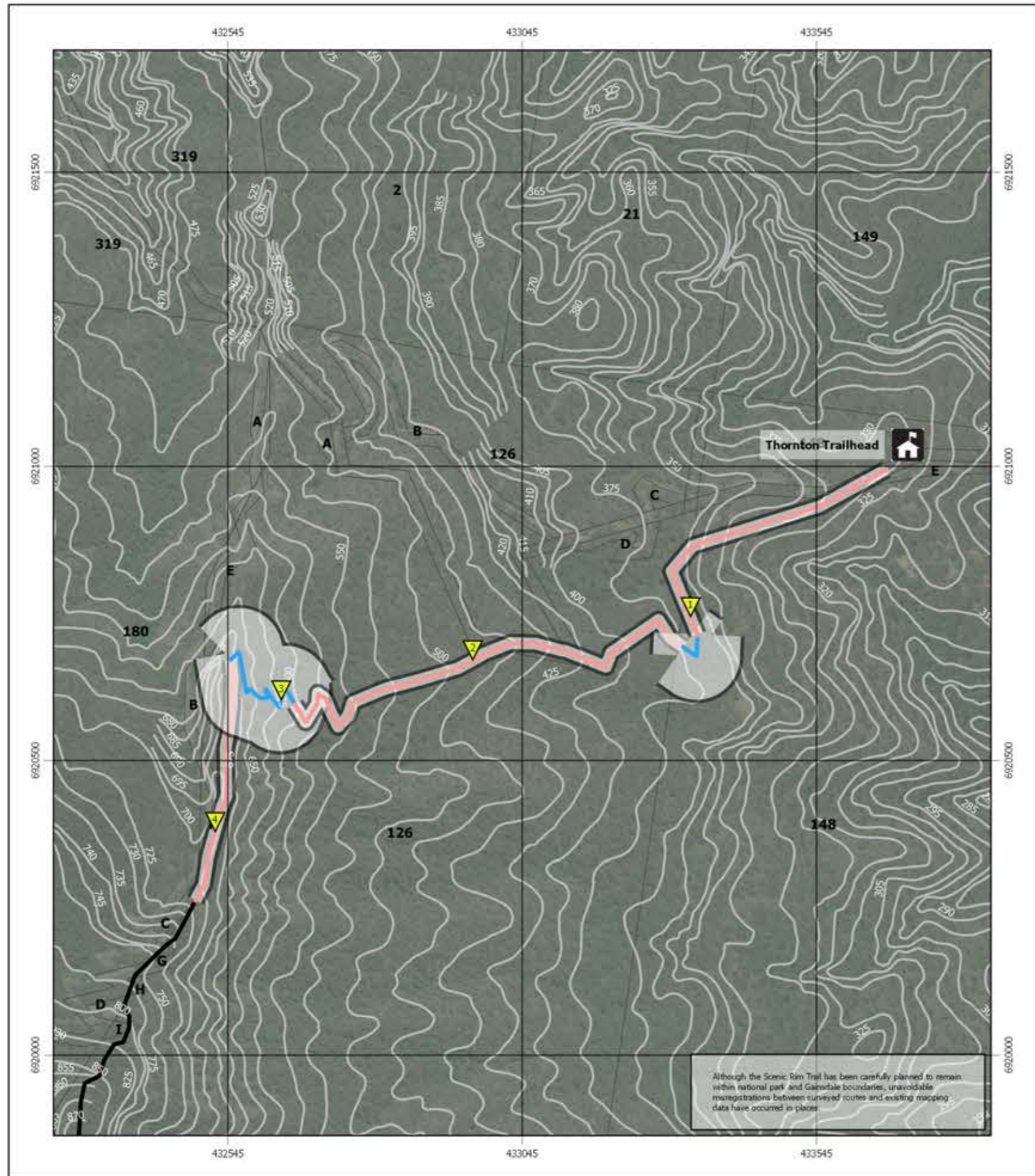
- Adjoining trail section
- Class 3
- Class 5
- Easement
- 933 Lot number
- Main Range National Park boundary

Class 3: Earthworks/constructed trail; Easement 150 m

Class 4 soil: Minimal to no ground disturbance, brushing of vegetation to provide access and for visibility; Easement 30 m

Class 4 boulders/scree: Some localised disturbance of individual boulders to make path stable; Easement 30 m

Class 5: No to minimal disturbance to ground and vegetation (generally open conditions at walking height with good visibility); Easement 30 m



SCENIC RIM TRAIL
BY SPICERS

Compiled by D. Tucker in association with T. Charters and P. Young
Data layers sourced from the Queensland Government
Horizontal datum: GDA94
Projection: Universal Transverse Mercator
Version 2, 31/07/2017

Images



After leaving the trailhead the route follows a ridge towards the base of the scarp. It is open country and the only input envisaged would be some initial slashing of grass to mark the route.



The slope at the base of the escarpment becomes steep and a section of constructed track will be required.



An eroded break in the cliffline is used for the ascent of scarp. Here a short enclosed ladder and steps will be required to provide safe access for hikers.



A close-up image of the cliffline.

Notes

Total length of section = 2125.45 m
 Class 3 length = 328.64 m
 Class 5 length = 1848.86 m
 Easement 30 m length = 1848.86 m
 Easement 150 m length = 328.64 m

Works Required

1. Slash narrow swathe to mark route through open grassy country.
2. Establish narrow track with side cut on steep slope below scarp.
3. Construct enclosed ladder and steps for safe ascent of the top of scarp.

GPS Points

- Marker 1: 56J 433333 6920738
- Marker 2: 56J 432978 6920680
- Marker 3: 56J 432636 6920604
- Marker 4: 56J 432526 6920390

Map and Elevation Profile of Thornton Trail Section 2

Legend

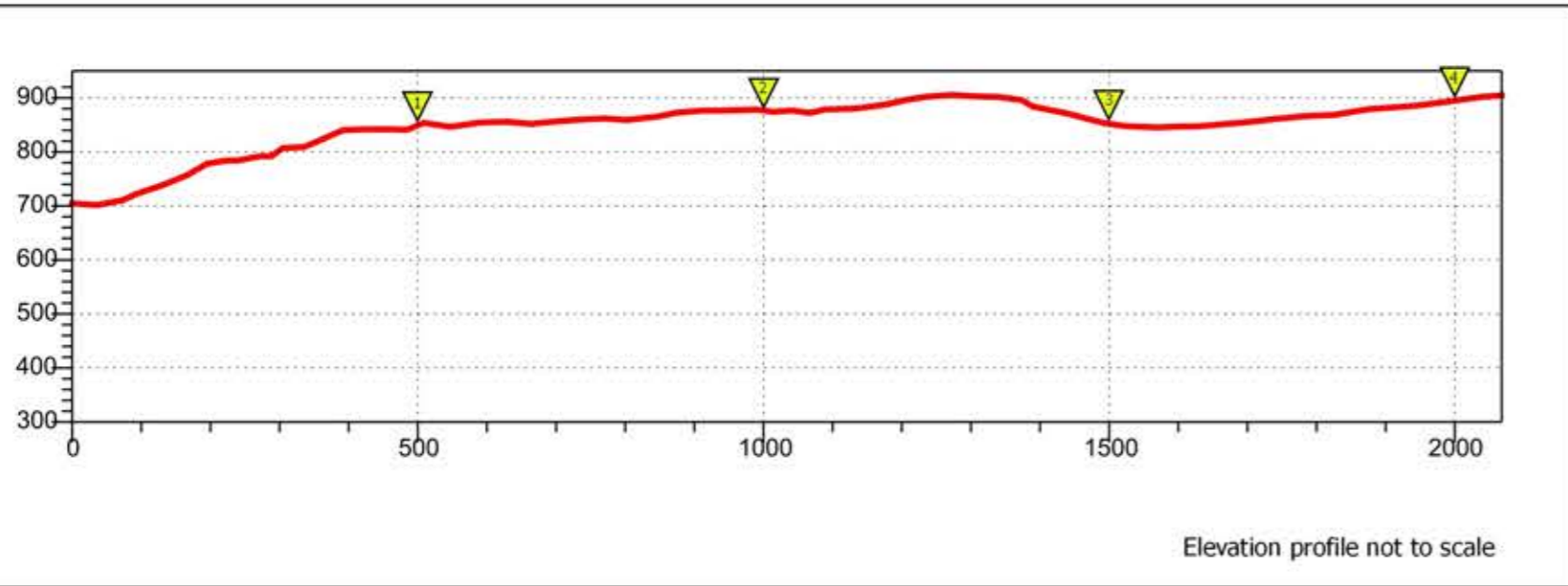
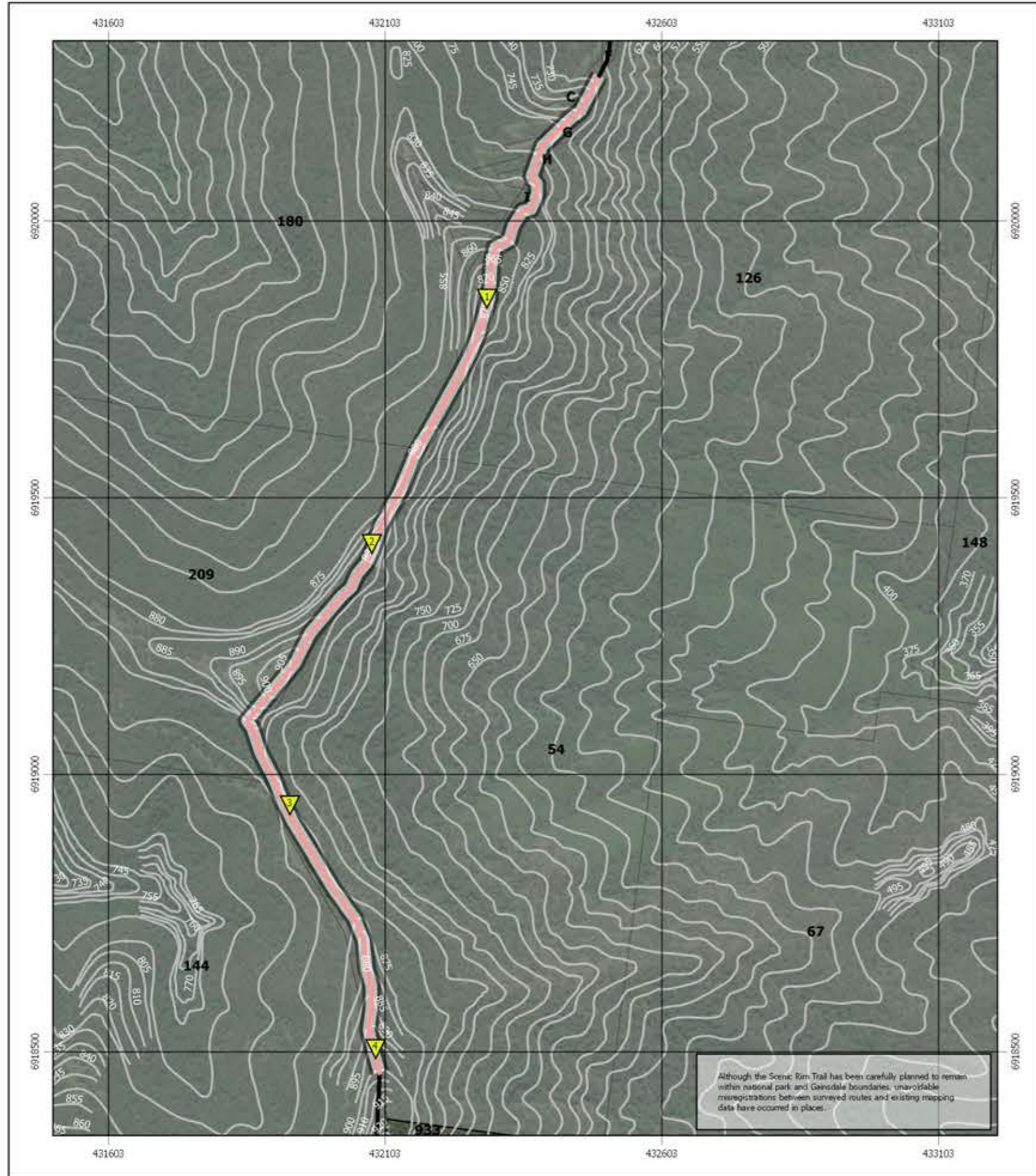
- Adjoining trail section
- Class 5
- Easement
- Lot number
- Main Range National Park boundary

Class 3: Earthworks/constructed trail; Easement 150 m

Class 4 soil: Minimal to no ground disturbance, brushing of vegetation to provide access and for visibility; Easement 30 m

Class 4 boulders/scree: Some localised disturbance of individual boulders to make path stable; Easement 30 m

Class 5: No to minimal disturbance to ground and vegetation (generally open conditions at walking height with good visibility); Easement 30 m



Compiled by D. Tucker in association with T. Charters and P. Young
 Data layers sourced from the Queensland Government
 Horizontal datum: GDA94
 Projection: Universal Transverse Mercator
 Version 2, 31/07/2017

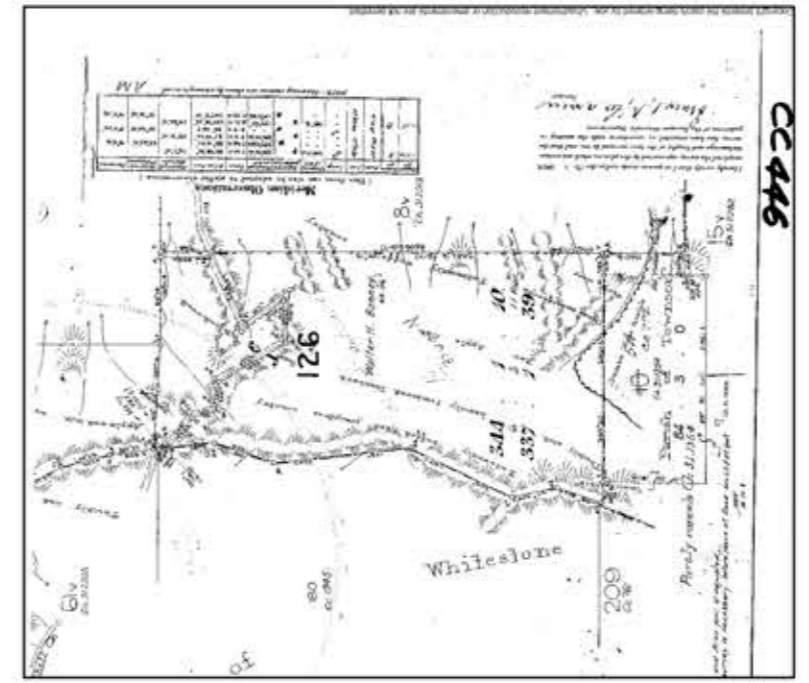
Images



After climbing the summit the route follows the scarp to Mt Mistake Farmhouse. Most of the route is open country.



There is an existing cattle pad along the scarp which will provide the basis for the trail.



Survey plans have been consulted to ensure that the trail remains located on Gainsdale properties and National Park in places where it is located close to property boundaries.

Notes

Total length of section = 2068.49 m
 Class 5 length = 2068.49 m
 Easement 30 m length = 2068.49 m

Works Required

- Some localised removal of Lantana will be required where it has overgrown the cattle pad.
- The route will be slashed or marked where it briefly detours away from cattle pad or where cattle pad is not obvious.

GPS Points

Marker 1: 56J 432286 6919846
 Marker 2: 56J 432076 6919395
 Marker 3: 56J 431910 6918976
 Marker 4: 56J 432090 6918978

Map and Elevation Profile of Thornton Trail Section 3

Legend

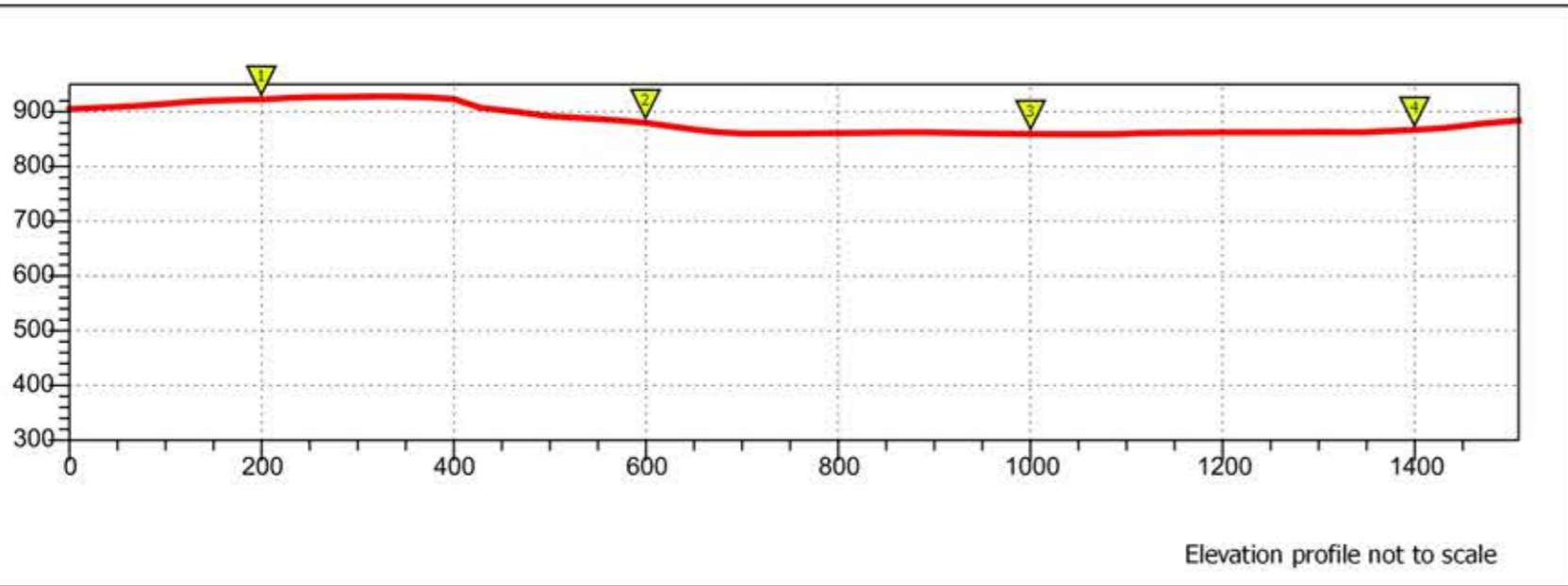
- Adjoining trail section
- Class 5
- Easement
- 933 Lot number
- Main Range National Park boundary

Class 3: Earthworks/constructed trail; Easement 150 m

Class 4 soil: Minimal to no ground disturbance, brushing of vegetation to provide access and for visibility; Easement 30 m

Class 4 boulders/scree: Some localised disturbance of individual boulders to make path stable; Easement 30 m

Class 5: No to minimal disturbance to ground and vegetation (generally open conditions at walking height with good visibility); Easement 30 m



Compiled by D. Tucker in association with T. Charters and P. Young
Data layers sourced from the Queensland Government
Horizontal datum: GDA94
Projection: Universal Transverse Mercator
Version 2, 31/07/2017

Images



The trail at 56J 432149 6917340, 375 m north of the Mt Mistake Farmhouse.



The trail at 56J 432148 6917618, 650 m north of the Mt Mistake Farmhouse.



The trail at 56J 432067 6918190, 270 m south of the start of Thornton Trail Section 3.

The third section of the Thornton Trail is open and easily traversed.

Notes

Total length of section = 1508.53 m
Class 5 length = 1508.53 m
Easement 30 m length = 1508.53 m

Works Required







- Some localised removal of Lantana will be required where it has overgrown the cattle pad.
- The route will be slashed or marked where it briefly detours away from cattle pad or where cattle pad is not obvious.

GPS Points

- Marker 1: 56J 432083 6918262
- Marker 2: 56J 432154 6917879
- Marker 3: 56J 432149 6917478
- Marker 4: 56J 432142 6917340

Map and Elevation Profile of Sunrise Lookout Walk

Legend

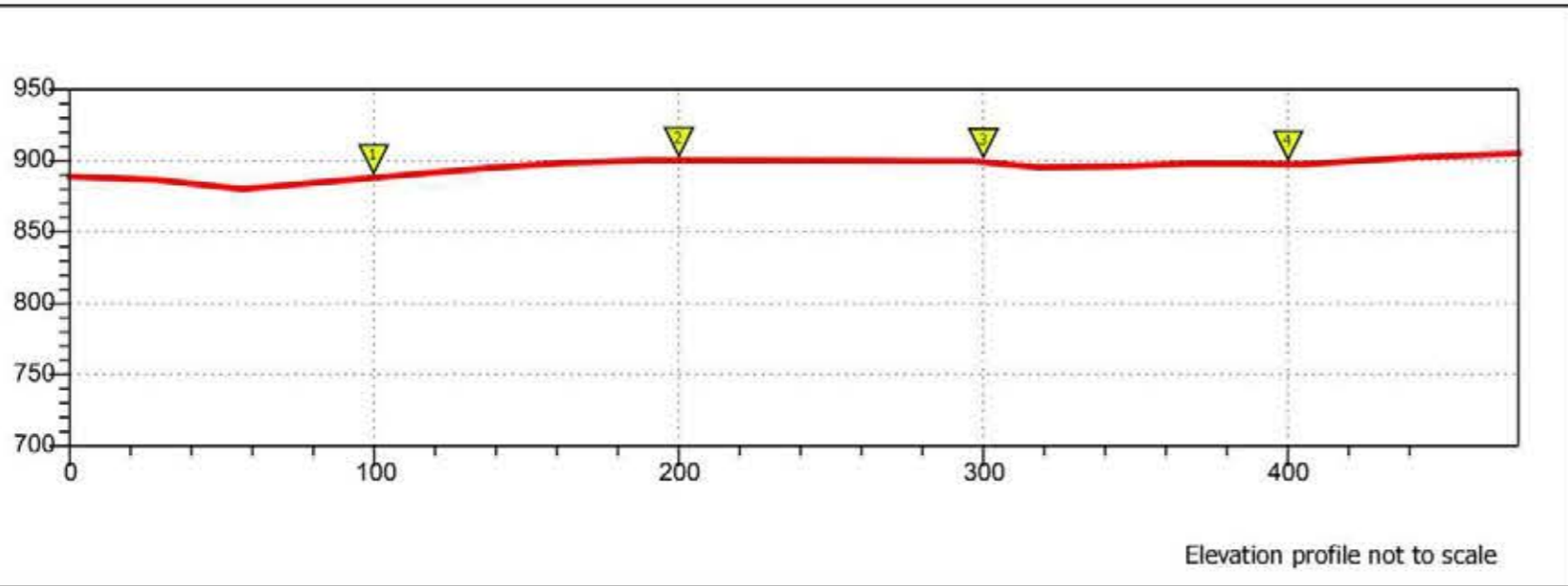
-  Adjoining trail section
-  Class 5
-  Easement
-  Existing QPWS trail
-  Lot number
-  Main Range National Park boundary


Class 3: Earthworks/constructed trail; Easement 150 m

Class 4 soil: Minimal to no ground disturbance, brushing of vegetation to provide access and for visibility; Easement 30 m

Class 4 boulders/scree: Some localised disturbance of individual boulders to make path stable; Easement 30 m


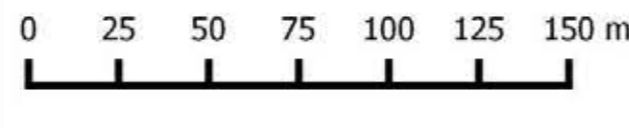
Class 5: No to minimal disturbance to ground and vegetation (generally open conditions at walking height with good visibility); Easement 30 m



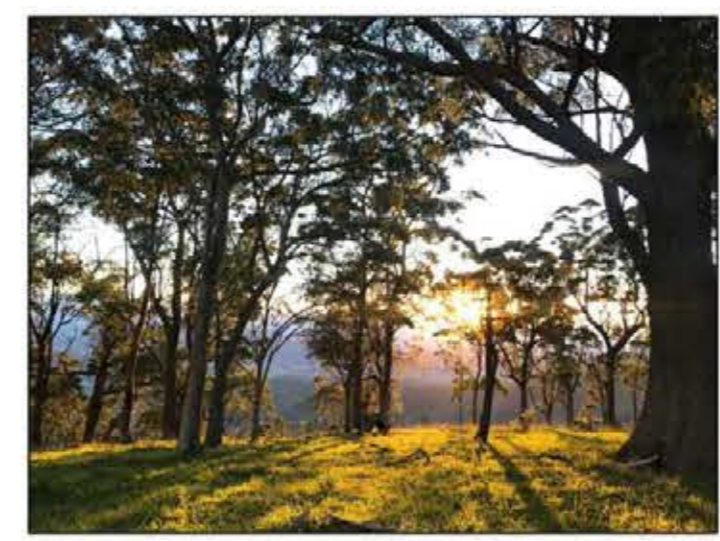


SCENIC RIM TRAIL
BY SPICERS

Compiled by D. Tucker in association with T. Charters and R. Young
Data layers sourced from the Queensland Government
Horizontal datum: GDA94
Projection: Universal Transverse Mercator
Version 2, 31/07/2017

Images



The view at dawn from Sunrise Lookout.



The Sunrise Lookout Walk route through open, grassy understorey.



The Sunrise Lookout Walk passes through large swathes of Blady Grass.

Notes

Total length of section = 475.88 m
 Class 5 length = 475.88 m
 Easement 30 m length = 475.88 m

GPS Points

Marker 1: 56J 432252 6916937
 Marker 2: 56J 432253 6916837
 Marker 3: 56J 432260 6916745
 Marker 4: 56J 432300 6916657

Works Required

1. Weeds, primarily Lantana, will be removed from the trail precinct.

Map and Elevation Profile of New Walking Trail 1

Legend

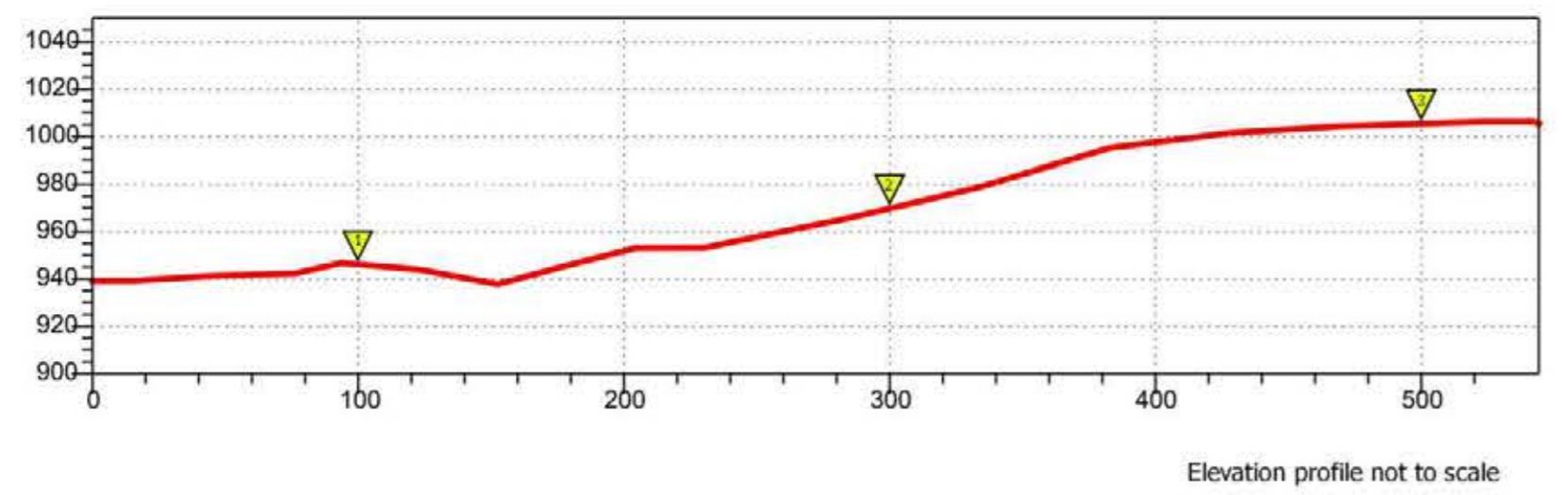
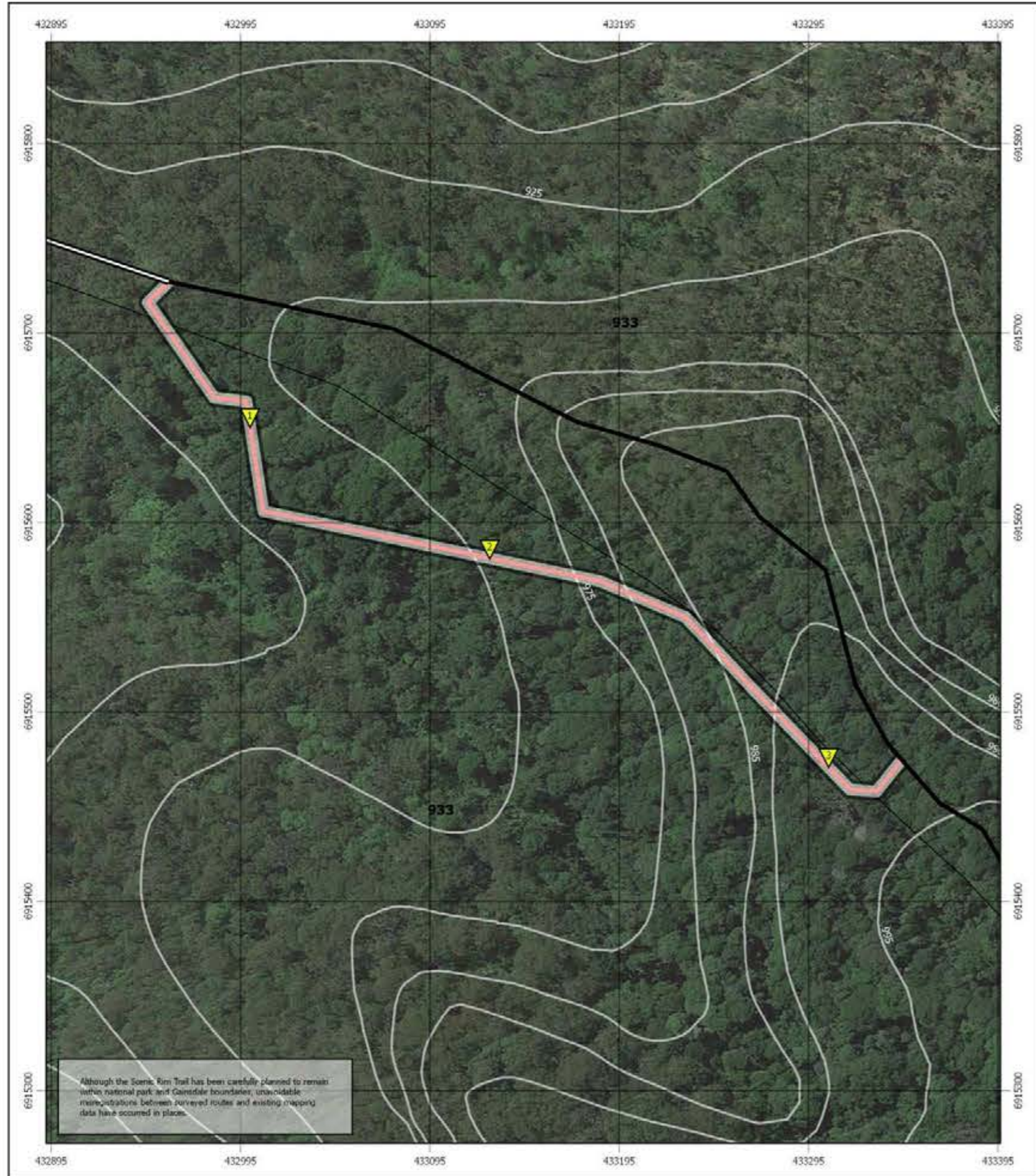
- Adjoining trail section
- Class 5
- Existing QPWS trail
- Easement
- 933 Lot number
- Main Range National Park boundary

Class 3: Earthworks/constructed trail;
Easement 150 m

Class 4 soil: Minimal to no ground disturbance, brushing of vegetation to provide access and for visibility; Easement 30 m

Class 4 boulders/scree: Some localised disturbance of individual boulders to make path stable; Easement 30 m

Class 5: No to minimal disturbance to ground and vegetation (generally open conditions at walking height with good visibility); Easement 30 m



SCENIC RIM TRAIL
BY SPICERS

Compiled by D. Tucker in association with T. Charters and R. Young
Data layers sourced from the Queensland Government
Horizontal datum: GDA94
Projection: Universal Transverse Mercator
Version 2, 31/07/2017

Images



The route is gently undulating with an open fern understorey below a dense rainforest canopy. It will require little attention apart from a small number of directional markers.



This section detours rainforest-Eucalyptus forest edges with dense vines and tree colonisers including Giant Stinging Tree.

Notes

This section of walking trail departs the old Winder Road to avoid stinging trees, heavily weed infested areas, a steep climb and a hot exposed area. It climbs 65 m in altitude gradually over 544 m and traverses under a rainforest canopy to rejoin the old road alignment.

Total length of section = 544.43 m
Class 5 length = 544.43 m
Easement 30 m length = 544.43 m

GPS Points

Marker 1: 56J 432999 6915658
Marker 2: 56J 433154 6915576
Marker 3: 56J 433311 6915465

Works Required

1. Direction markers will be established at intersections with other formal or informal tracks.

Map and Elevation Profile of Reopened Winder Road Section 1

Legend

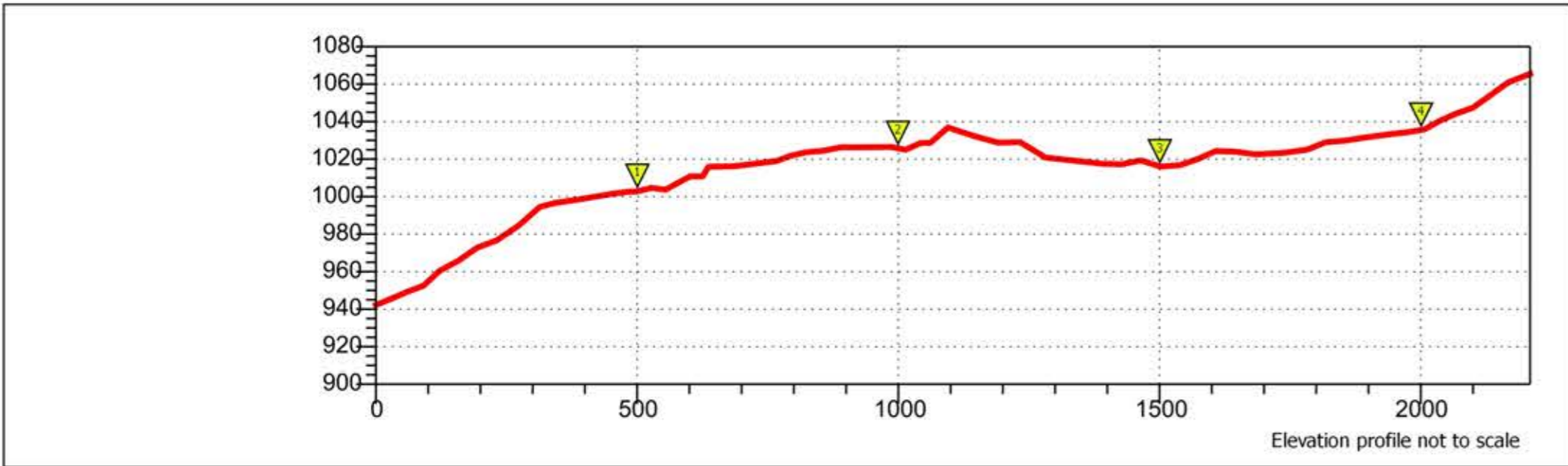
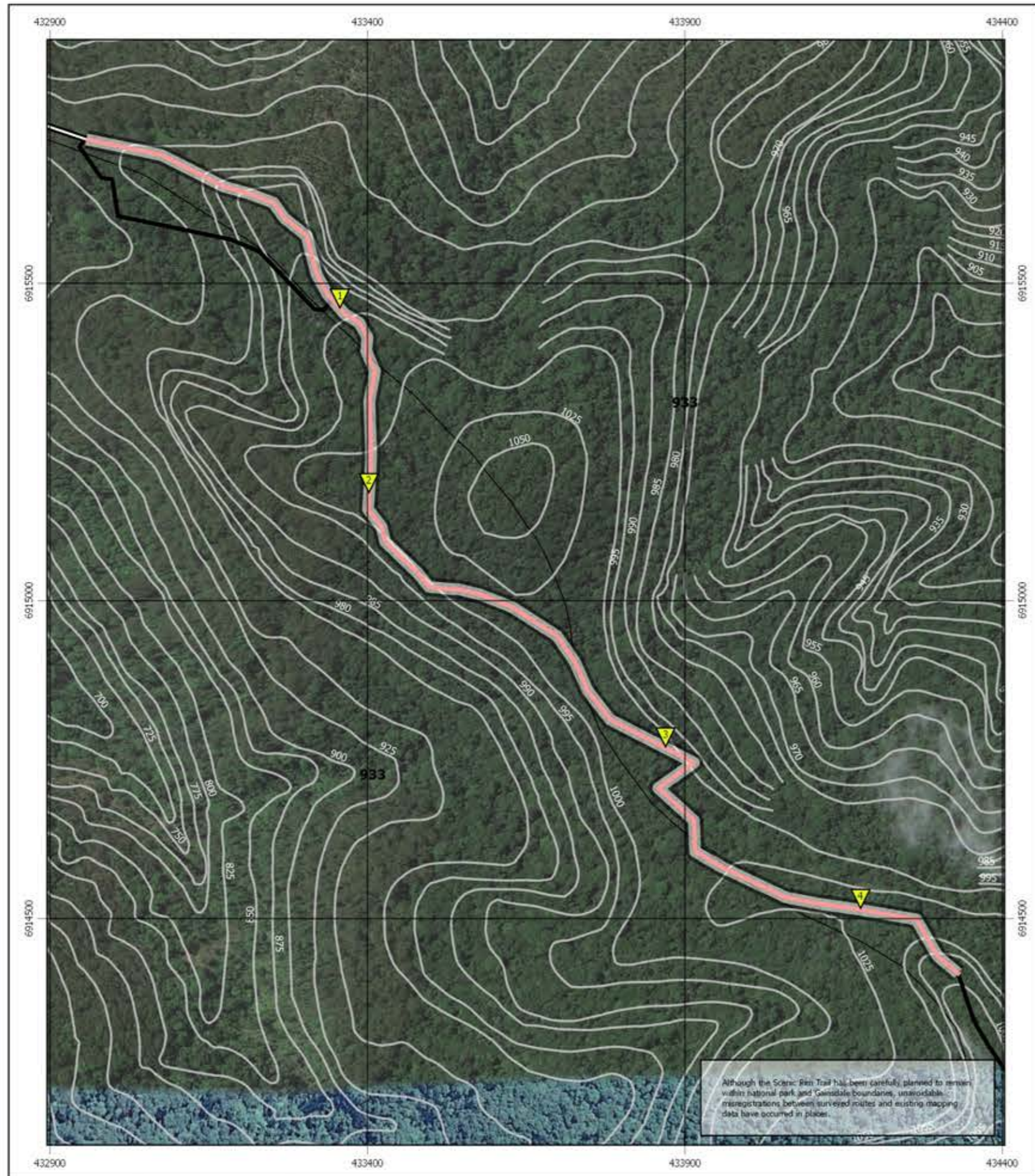
- Adjoining trail section
- Class 5
- Easement
- Existing QPWS trail
- Lot number
- Main Range National Park boundary

Class 3: Earthworks/constructed trail; Easement 150 m

Class 4 soil: Minimal to no ground disturbance, brushing of vegetation to provide access and for visibility; Easement 30 m

Class 4 boulders/scree: Some localised disturbance of individual boulders to make path stable; Easement 30 m

Class 5: No to minimal disturbance to ground and vegetation (generally open conditions at walking height with good visibility); Easement 30 m



SCENIC RIM TRAIL
BY SPICERS

Compiled by D. Tucker in association with T. Charters and P. Young
Data layers sourced from the Queensland Government
Horizontal datum: GDA94
Projection: Universal Transverse Mercator
Version 2, 31/07/2017

Images



After leaving the end of the Northern Fire Trail south of Mount Mistake Farmhouse the route passes through a short section of Eucalyptus open forest. At this point the former road is heavily overgrown with weed in places with grades up to 20%.



Upon entering the rainforest the abandoned road remains visible although ferns, vines and saplings are present.



A section of the road receives seepage from upslope and will require paving with gravel to make it serviceable.



Localised pig wallows will also require attention to drainage and possibly paving with gravel.

Notes

This section of the route crosses into the northern-most expanse of rainforest within Main Range National Park. The route follows the crest of the Mistake Range which is located to the west of the escarpment. Consequently there are few landmarks along the route and it is easy to take the wrong ridge whilst hiking. Between the start and approximately 500m south along the The Reopened Winder Road is ATV track. A proposed deviation (New Walking Trail 1) provides an alternative route for walkers which re-connects with the Reopened Winder Road at the point 500m to the south.

Total length of section = 2210.03 m
Class 5 length = 2210.03 m
Easement 30 m length = 2210.03 m

GPS Points

- Marker 1: 56J 433350 6915468
- Marker 2: 56J 433488 6915034
- Marker 3: 56J 433879 6914763
- Marker 4: 56J 434166 6914516

Works Required

1. Vegetation will be brush cut and the road surface will be re-profiled.
2. Localised paving will be installed to fix boggy sections including pig wallows.
3. Attention will be directed to drainage on sections of steeper gradient.
4. Direction markers will be established at intersections with other formal or informal tracks.

Map and Elevation Profile of Reopened Winder Road Section 2

Legend

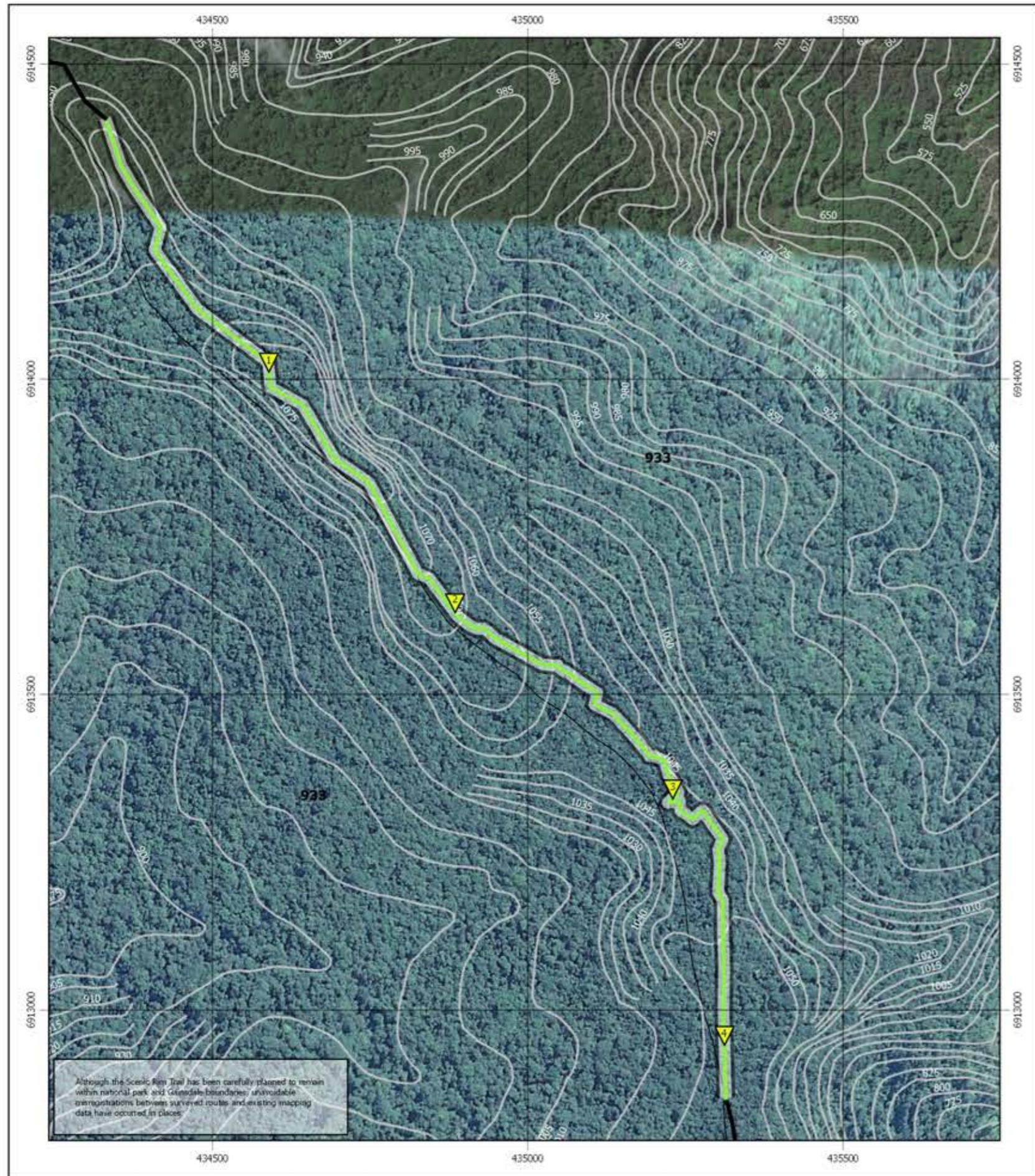
- Adjoining trail section
- Class 4 soil
- Easement
- Lot number
- Main Range National Park boundary

Class 3: Earthworks/constructed trail; Easement 150 m

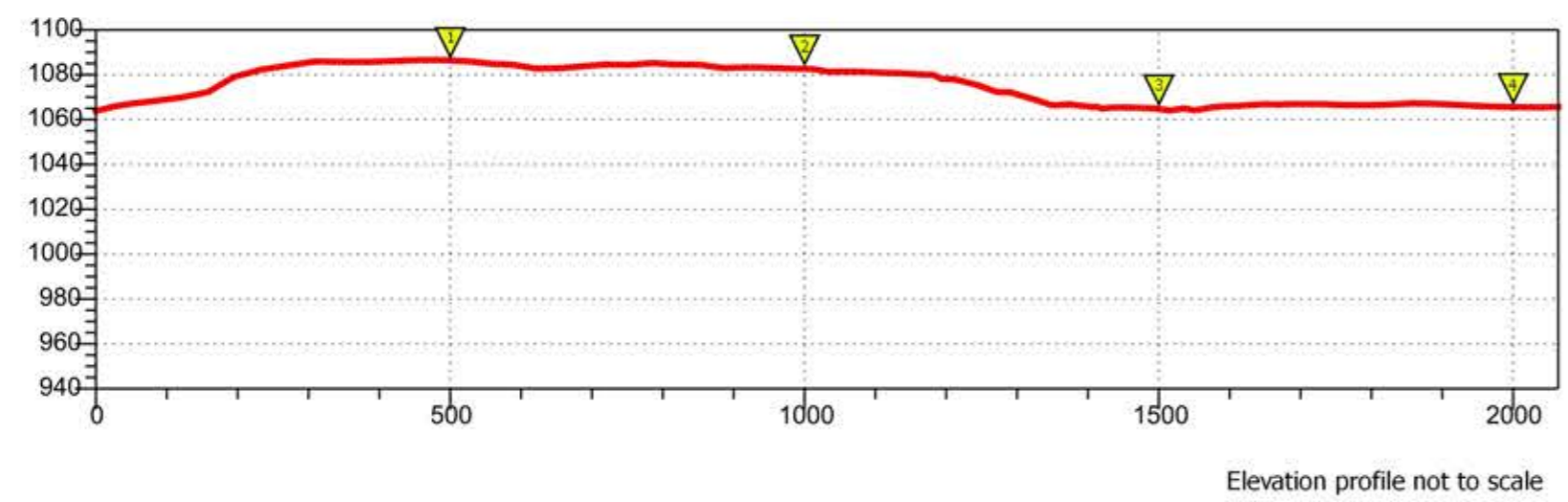
Class 4 soil: Minimal to no ground disturbance, brushing of vegetation to provide access and for visibility; Easement 30 m

Class 4 boulders/scree: Some localised disturbance of individual boulders to make path stable; Easement 30 m

Class 5: No to minimal disturbance to ground and vegetation (generally open conditions at walking height with good visibility); Easement 30 m



Although the Scenic Rim Trail has been carefully stamped to remain within national park and Queensland boundaries, unavoidable discrepancies between surveyed route and existing mapping data have occurred in places.



Compiled by D. Tucker in association with T. Charters and P. Young
 Data layers sourced from the Queensland Government
 Horizontal datum: GDA94
 Projection: Universal Transverse Mercator
 Version 2, 31/07/2017

Images



Sections of the route were difficult to re-locate especially where there has been heavy regrowth.



A dense patch of regeneration with Giant Stinging Tree covering the road surface.

Notes

This section of the route crosses into the northern-most expanse of rainforest within Main Range National Park. The route follows the crest of the Mistake Range which is located to the west of the escarpment. Consequently there are few landmarks along the route and it is easy to take the wrong ridge whilst hiking. Certain sections have had significant disturbance from logging operations or storms resulting in dense low level vine growth.

Total length of section = 2064.39 m
 Class 4 soil length = 2064.39 m
 Easement 30 m length = 2064.39 m

GPS Points

- Marker 1: 56J 434590 6914015
- Marker 2: 56J 434882 6913635
- Marker 3: 56J 435230 6913336
- Marker 4: 56J 435311 6912917

Works Required

1. Brushing and re-profiling will be required in sections due to a heavy cover of ground vines.
2. Works targeting drainage will be conducted on steeper grades.

Map and Elevation Profile of Reopened Winder Road Section 3

Legend

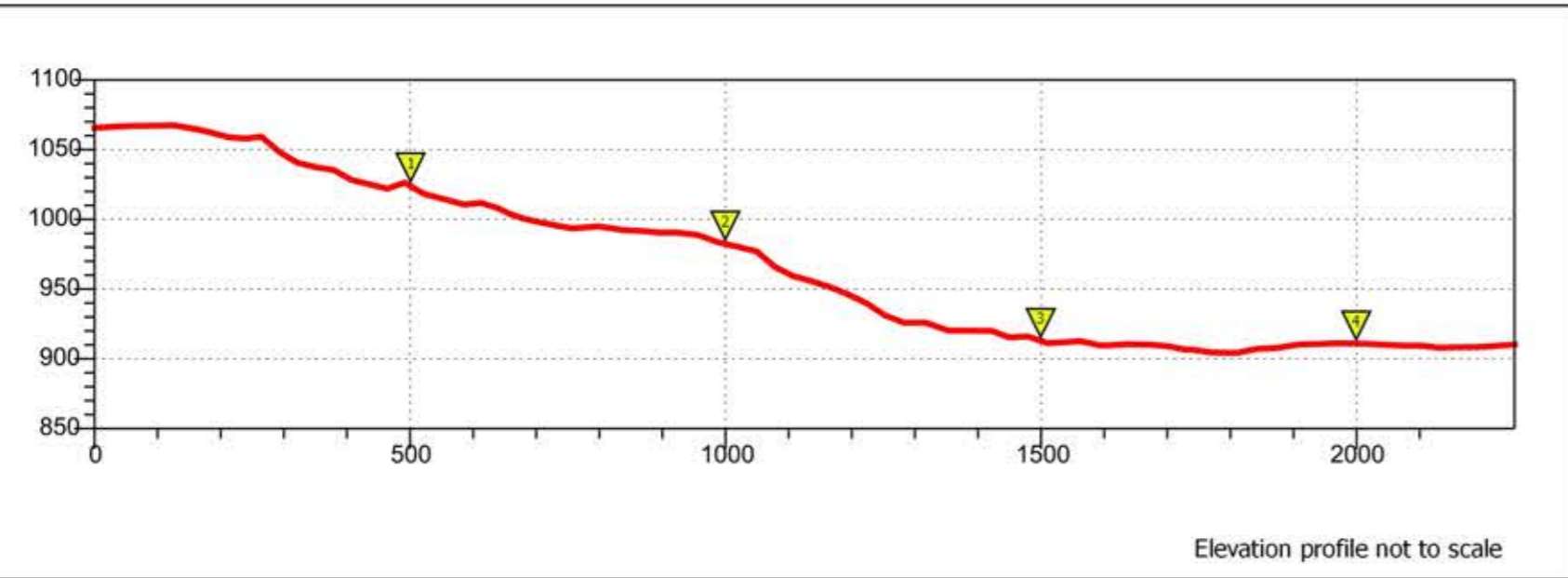
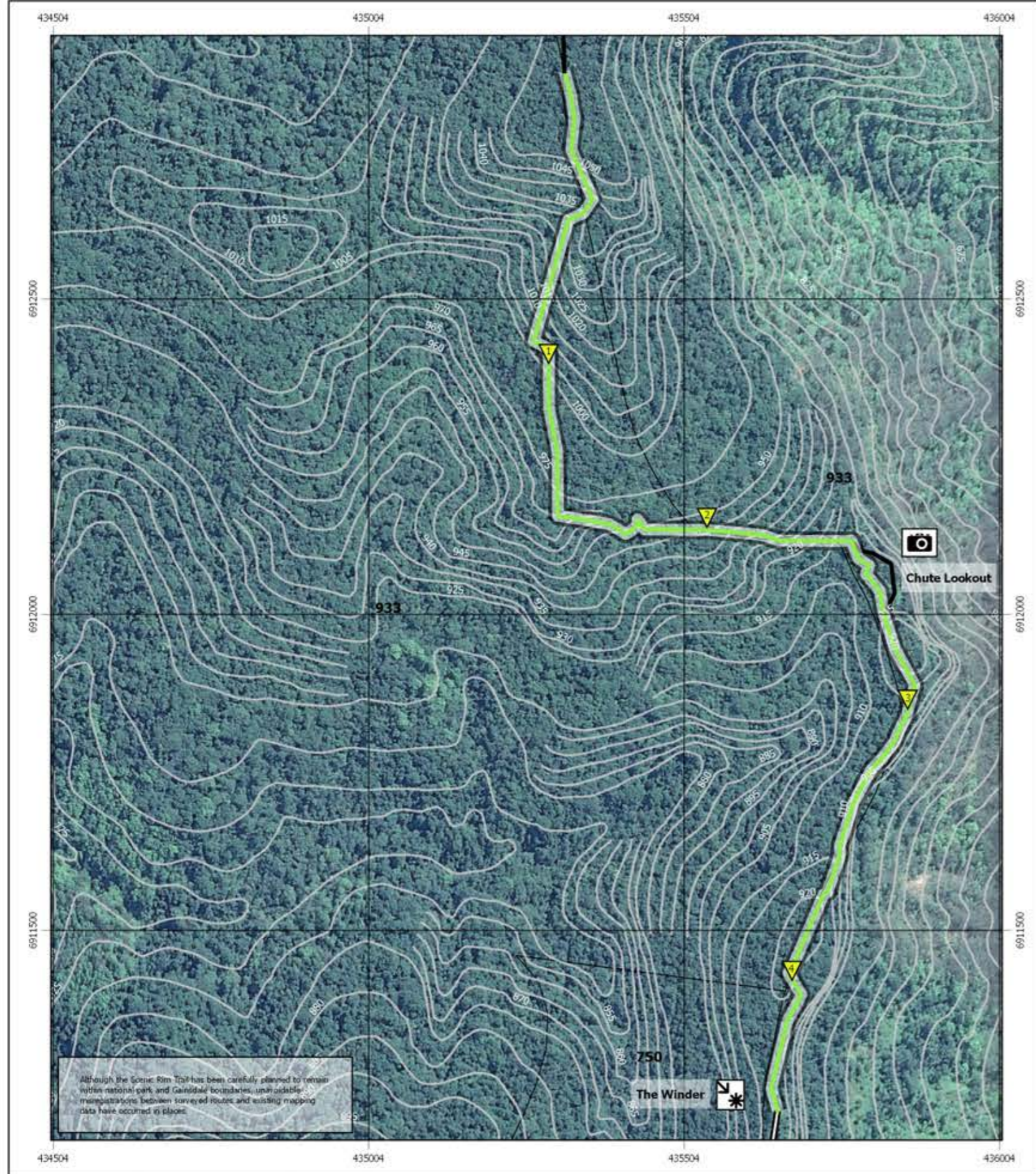
- Adjoining trail section
- Class 4 soil
- Easement
- Existing QPWS trail
- 933 Lot number
- Main Range National Park boundary

Class 3: Earthworks/constructed trail; Easement 150 m

Class 4 soil: Minimal to no ground disturbance, brushing of vegetation to provide access and for visibility; Easement 30 m

Class 4 boulders/scree: Some localised disturbance of individual boulders to make path stable; Easement 30 m

Class 5: No to minimal disturbance to ground and vegetation (generally open conditions at walking height with good visibility); Easement 30 m



SCENIC RIM TRAIL
BY SPICERS

Compiled by D. Tucker in association with T. Charters and P. Young
Data layers sourced from the Queensland Government
Horizontal datum: GDA94
Projection: Universal Transverse Mercator
Version 2, 31/07/2017

Images



The route traverses patches of open ferny rainforest.



The old road alignment is very distinct and open in certain sections.



A cobble of broken basalt rock covers the road surface in places.

Notes

This section of the route crosses into the northern-most expanse of rainforest within Main Range National Park. The route follows the crest of the Mistake Range which is located to the west of the escarpment. Consequently there are few landmarks along the route and it is easy to take the wrong ridge whilst hiking. The Chute Lookout Deviation Walking Trail leaves the Reopened Winder Road Section 3 at 1250m along the route and rejoins at 1365m.

Total length of section = 2250.95 m
Class 4 soil length = 2250.95 m
Easement 30 m length = 2250.95 m

GPS Points

- Marker 1: 56J 435289 6912393
- Marker 2: 56J 435541 6912134
- Marker 3: 56J 435865 6911864
- Marker 4: 56J 435682 6911415

Works Required

1. Paving and drainage works will be established on long steep grades.
2. Parts of the trail will be re-profiled with attention to drainage.
3. Parts of the trail will be brush cut and re-profiled.